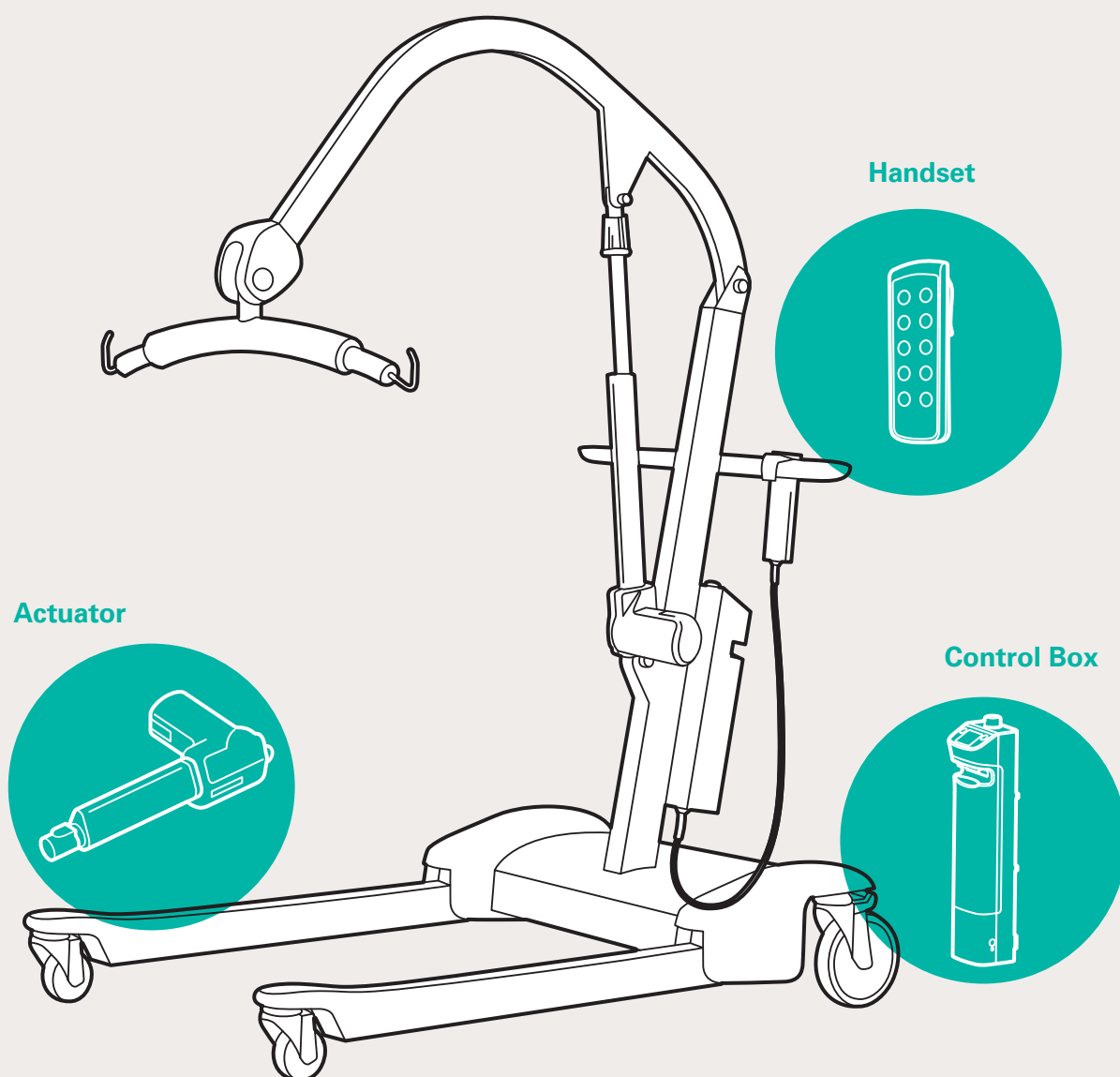


ACTUATION SYSTEMS for PATIENT LIFTING APPLICATIONS

TiMOTION Provides Flexibility,
Customized Products, and Tailor-Made Services



AN INTELLIGENT ACTUATION SYSTEM FOR PATIENT LIFTS

TiMOTION created an optimum solution to meet specific patient needs and to secure a safe and comfortable transfer.

The TiMOTION actuation system also provides a safe and efficient working environment for the caregivers.



AN INTELLIGENT CONTROL SYSTEM TC12 SERIES

- IP protection: IPX4
- EN 10535: 2006 and IEC60601-1:2005 compliant
- Multiple options of display: without / black-white / color
- Includes battery box
- With wall mount battery charger or battery charger dock
- Regular maintenance / overload alarm notification
- Battery alarm when battery with lower capacity remaining
- Easy installation

Key Features of the UI on TC12*

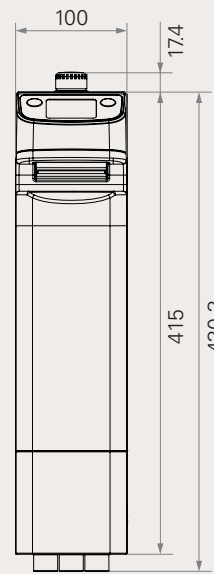
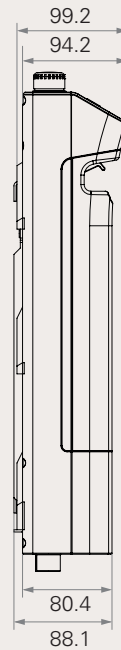
Note: here's an example of the TC12 with color-display



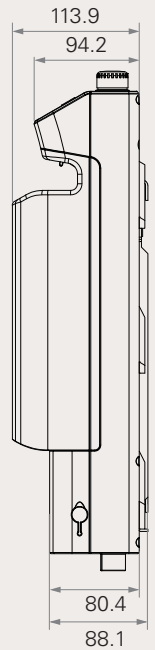
Drawing

Standard Dimension (mm)

Battery type
24V, 2.9AH

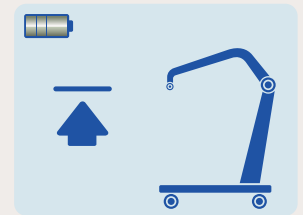
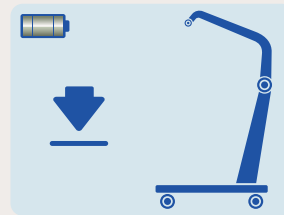
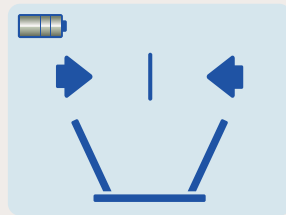
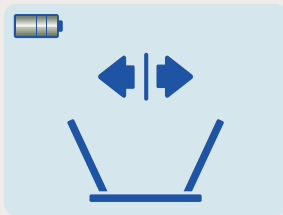


Battery type
24V, 5.0AH



Operation Status

Control open / close, and up / down movements



Notification

Alarm for low battery capacity, overloading, and safety switch to prevent over extending

ATTENTION

PLEASE RECHARGE
OR
REPLACE BATTERY

ATTENTION

RUN OUT
OF BATTERY

ATTENTION



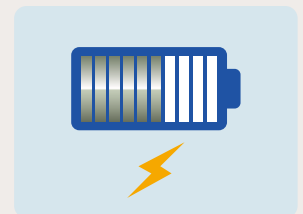
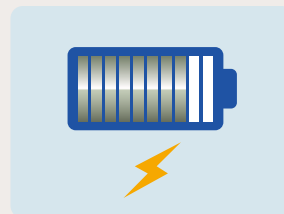
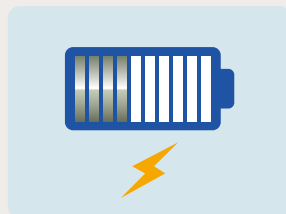
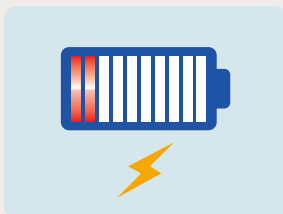
OVER LOADING

ATTENTION



UP LIMIT SWITCH FAIL

Battery Status



Note: for more detailed user guide information,
please contact TiMOTION sales team.

Solution Overview

Control box: TC12

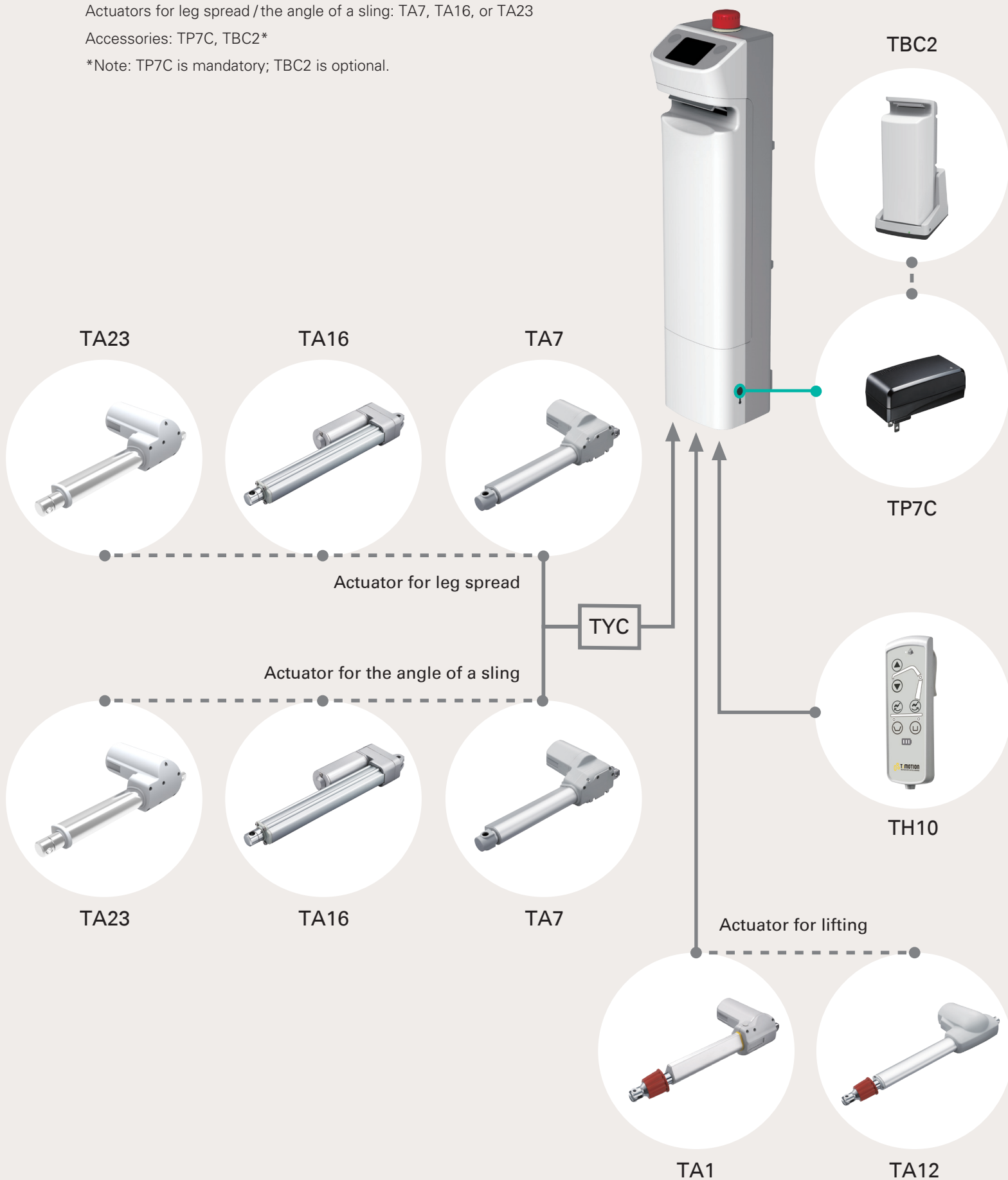
Handset: TH10

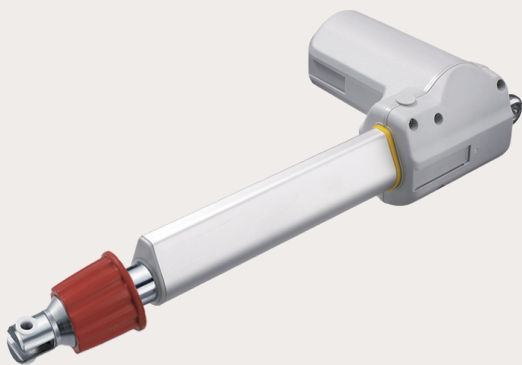
Actuators for lifting: TA1 or TA12

Actuators for leg spread / the angle of a sling: TA7, TA16, or TA23

Accessories: TP7C, TBC2*

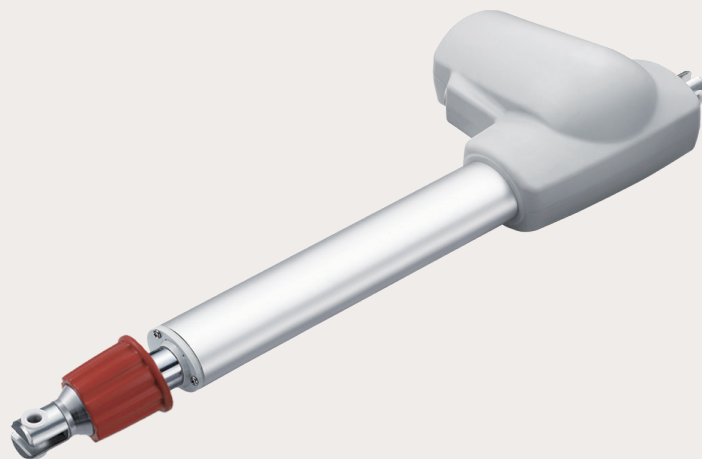
*Note: TP7C is mandatory; TBC2 is optional.





ACTUATOR for LIFTING TA1 SERIES

- Load: 6,000 / 8,000N in push
- Protection class: IPX4
- Certificate: IEC 60601-1 compliant



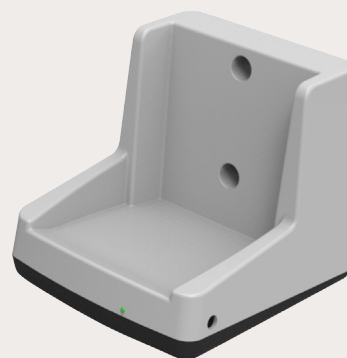
ACTUATOR for LIFTING TA12 SERIES

- Load: 10,000 / 12,000N in push
- Protection class: IPX4
- Certificate: IEC 60601-1 compliant



BATTERY CHARGER for TC12 TP7C SERIES

- The TP7C must always be ordered separately when ordering TC12

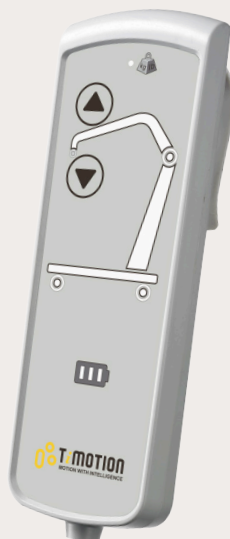


CHARGING CRADLE for TC12 TBC2 SERIES

- TBC2 servers as a battery charger (optional)

HANDSET TH10 SERIES

- Indicator lights show battery status
- Controls lifting and lowering
- Controls lower leg movement
- Alarm notifications for low battery capacity and overloading



- For single motor



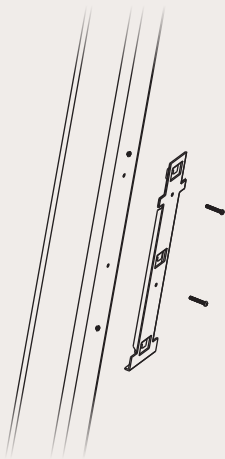
- For two motors



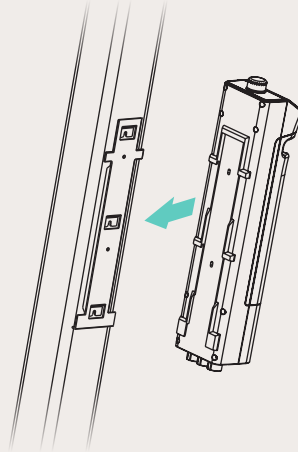
- For three motors

Installation Guide

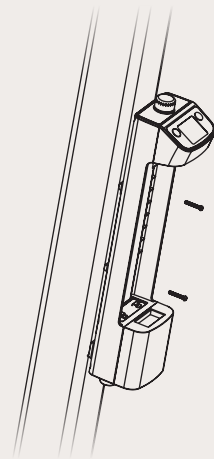
1. Install the bracket on the hoist frame



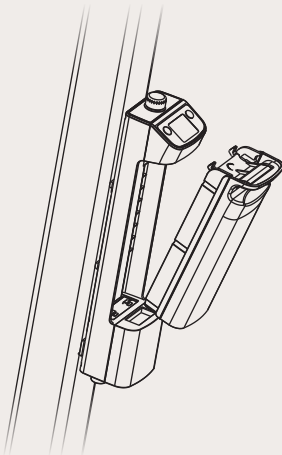
2. Install the TC12 on the bracket



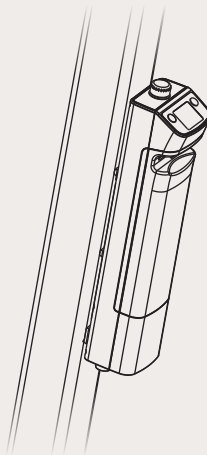
3. Make sure all fasteners are tightened properly



4. Install the battery



5. Installation is complete



Headquarter

TiMOTION Technology Co., Ltd.
Tel 886 2 2219 6633
Email sales@timotion.tw

TiMOTION Kunshan

Tel 86 512 5526 0735
Email sales@timotion.tw

TiMOTION Korea

Tel 82 31 745 1060
Email sales@timotion.co.kr

TiMOTION Europe

Tel 33 (0)1 74 82 50 51
Email sales@timotion.fr

TiMOTION Japan

Tel 81(0)6 6763 1110
Email sales@timotion.jp

TiMOTION USA

Tel (704) 708 6924
Email sales@timotionusa.com